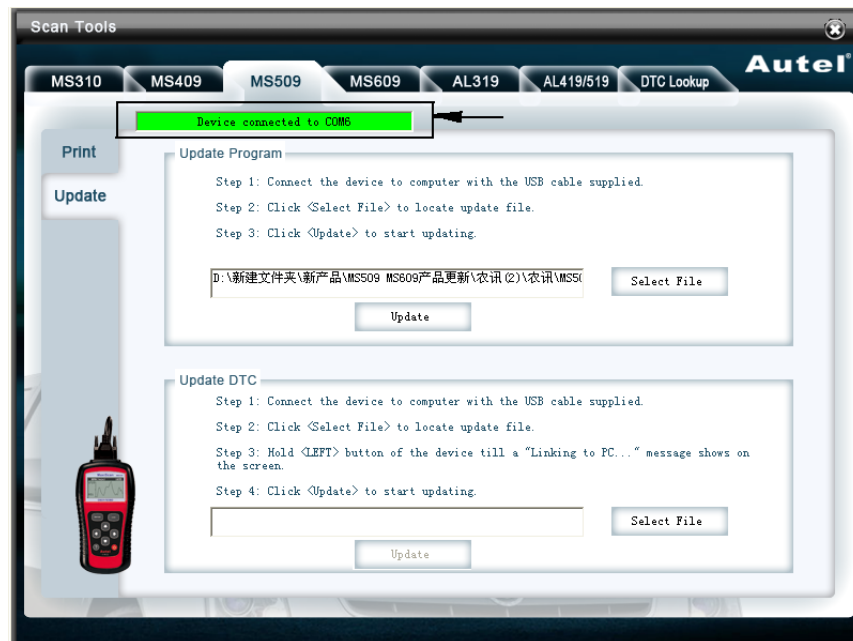


Update Instructions

Dear customer,

While updating MS509, please follow the steps below to do the update.

1. Install **MaxiLink** in your computer.
You can find the **MaxiLink** setup program included in the CD. Install the **MaxiLink** in your PC and run the program.
2. Connect the MS509 to your PC with the cable included.
3. If the connection is fine, you will find the status bar at the top of MaxiLink window become green, showed as the image.



4. Click "**Select File**" on the **MaxiLink** window to locate the update file.
Note: *There are two update files in this zip. Our MS509 had changed hardware design so you would not know which one is the applicable one for you. Don't worry just try one by one. The one which works fine is the correct one.*
5. Click "**Update**" to begin updating your tool. When update is done, the **MaxiLink** will pop up a message.
6. Power off the tool then on again to finish the update.